

## EW1528

# Heavy-Duty Dual Monitor Support Arm Desk for Flat/Curved/Ultrawide Monitor up to 35" and 15 Kg Full VESA 75x75 / 100x100

- Dual Monitor Arm for standard / ultra-wide monitors up to 35" in size and 15Kg in weight. The quick-release VESA bracket features 75x75mm and 100x100mm mounting capability, and the stand secures to desks up to 80mm thick with the heavy-duty C-clamp with the included grommet mount.
- Premium Mechanical spring-assist arm perfectly counterbalances the weight of your monitor for optimal ergonomic height adjustments. Ideal for gaming setups, this heavy-duty mount easily repositions large screens at the touch of a hand.
- Optimized tilting head structure provides smooth adjustments with +90° to -90° tilt, 180° swivel, 360° rotation, and 536mm of smooth height adjustment with Mechanical spring lift. Cable management covers keep cords neatly out of the way during transitions and create a clean, organized appearance.
- Mounting your monitors is a simple process with the detachable VESA plate, and we provide all the hardware and instructions for easy assembly.

### DESCRIPTION

Enhance your workstation with our robust Heavy-Duty Dual Monitor Support Arm Desk, designed to accommodate flat, curved, and ultrawide monitors up to 45 inches and 15 kg. This dual monitor arm combines versatility, ergonomic adjustability, and a sleek, organized design, making it perfect for any professional or gaming setup.

#### Versatile Mounting Capability

Our dual monitor arm is engineered to support standard and ultra-wide monitors up to 35 inches and 15 kg. The quick-release VESA bracket supports 75x75 mm and 100x100 mm mounting patterns for easy compatibility. It secures to desks up to 80 mm thick with a heavy-duty C-clamp and includes a grommet mount for additional flexibility.

#### Ergonomic Adjustability

Equipped with premium mechanical spring-assist arms, this dual monitor support arm perfectly counterbalances the weight of your monitors, allowing for effortless height adjustments. Whether you're setting up for gaming or professional work, this heavy-duty mount easily repositions large screens at the touch of a hand, enhancing both gaming and work experiences.

#### Flexible Movement

The optimized tilting head structure provides smooth adjustments with a +90° to -90° tilt range, 180° swivel, and 360° rotation. With 536 mm of smooth height adjustment using the mechanical spring lift, this dual monitor arm offers maximum flexibility to suit your viewing preferences.

#### Clean and Organized Design

Integrated cable management covers keep cords neatly out of the way, maintaining a tidy and professional appearance. Say goodbye to clutter and enjoy a more organized workspace.

#### Easy Installation

Mounting your monitors is a simple process with the detachable VESA plates. We provide all the necessary hardware and detailed instructions for straightforward assembly, ensuring a hassle-free setup.

#### Upgrade Your Workspace

The Heavy-Duty Dual Monitor Support Arm Desk is the perfect blend of robust construction, easy adjustability, and clean design. Whether for gaming or professional use, this dual monitor arm ensures an ergonomic, organized, and flexible setup, enhancing your overall experience.

### TECHNICAL

- Material: Aluminum, Steel, Plastic
- Surface Finish: Powder coating
- Color: Matte Silver
- Product Size WxHxD: 1128x118x663mm
- Installation: Clamp, Desk mount
- Suggested Screen Size: 17"-35"



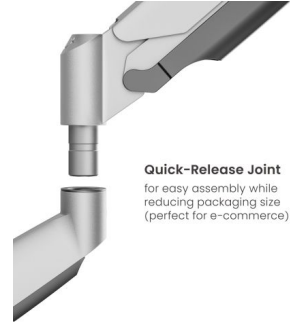
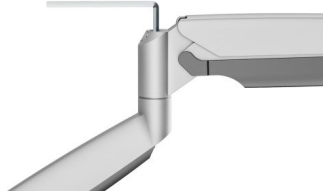
- Suitable for: 2 screens
- Weight Capacity Flat Monitor: up to 15Kg (each monitor)
- Weight Capacity Curved Monitor: up to 12Kg (each monitor)



mm  
35 |



**Spring Tension Mechanism**  
for perfect weight adjustments



**Quick-Release Joint**  
for easy assembly while  
reducing packaging size  
(perfect for e-commerce)

- Product Weigh:

(mm):



n):

Built-In 180° Rotation Stop